



Everyone needs to

PLAYHARD

once in a while!!

Beth Landon

Lab Tech, Department of Biology

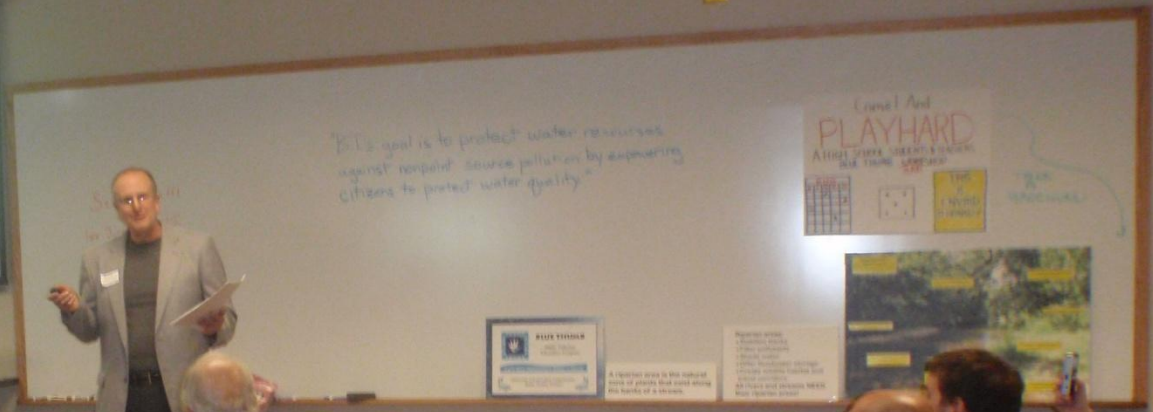
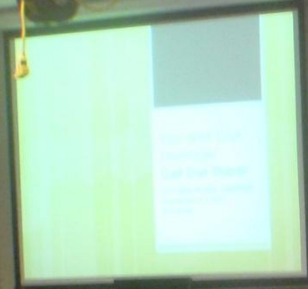
November was a busy month!

November 5 - 6, 2010

Blue Thumb 2010 Volunteer Conference

November 20, 2010

First Annual PLAYHARD



Bruce Lemmon, owner
GEM (Global Events Management)



Post Oak Creek
West Cache Creek

The Wichita Mountains
National Wildlife Refuge
works with the Blue Thumb
Program to monitor local
streams.

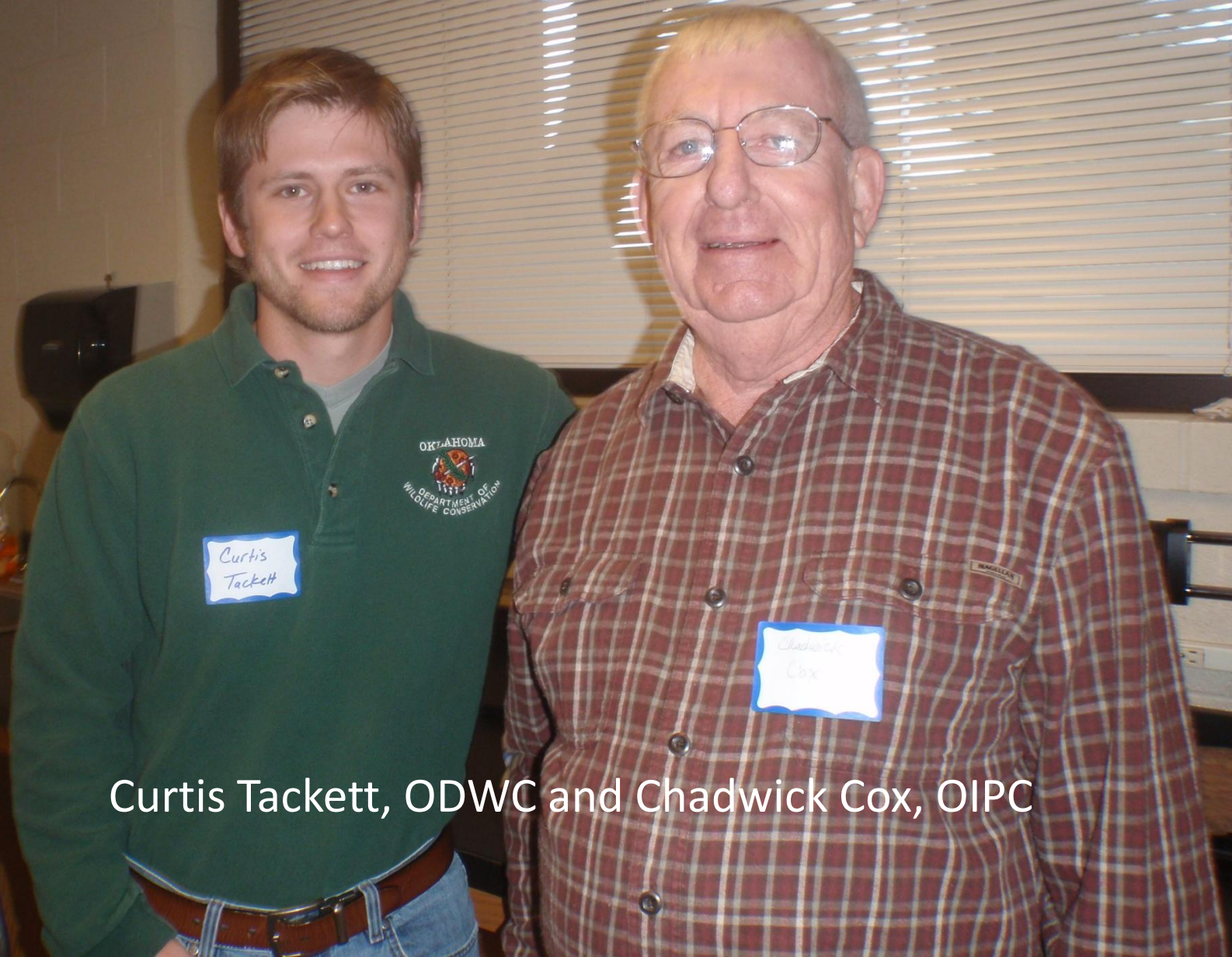
Blue Thumb
Are your local streams
healthy?
Become a Blue Thumb volunteer and find out!



Pamela

Jeannie

Speaking on Invasive Plants



Curtis Tackett, ODWC and Chadwick Cox, OIPC

Of course,
we had some
"hands on"
activities.



Understanding Data with Jean and Kim



At the Gamble – Buchanan Outdoor Lab:
An Urban Wilderness





As the sun sets, we walk off into
the forest (not really).
There is a warehouse next door.



PLAY HARD

Blue Thumb Workshop for High School Students and Teachers



HAVE FUN, MEET NEW PEOPLE, LEARN SOMETHING NEW ABOUT WATER!

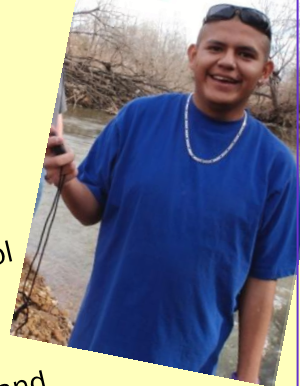
Don't miss the PLAY HARD workshop designed just for the High School crowd. During the workshop, you will enjoy being with kids you know and kids you don't know but will know before the end of the day.

Learn something new about water quality through quizzes, games, and competitions. Dabble in Origami. Get a quick tour of the OCU Campus.

Chances are EnviroThon teams will take home some information useful for their next competition.

There will be neat door prizes.

We'll all enjoy lunch in the world famous OCU Caf! Tell your teacher YOU want to **PLAYHARD** now!



PLAY HARD

Loose Agenda for the Day...

9:45 a.m. Registration

10:00 a.m. Ice Breaker

10:30 JEOPARDY for Science Geeks (Don't worry, you'll do fine!)

11:15 Environmental Citizenship

11:45 Lunch

12:45 Bug Bingo

1:30 Mystery of the Polluter—Put on your Official Badge and begin the investigation!

2:45 Wrap up and Door Prizes

3:00 Optional Short OCU Campus Tour for those interested

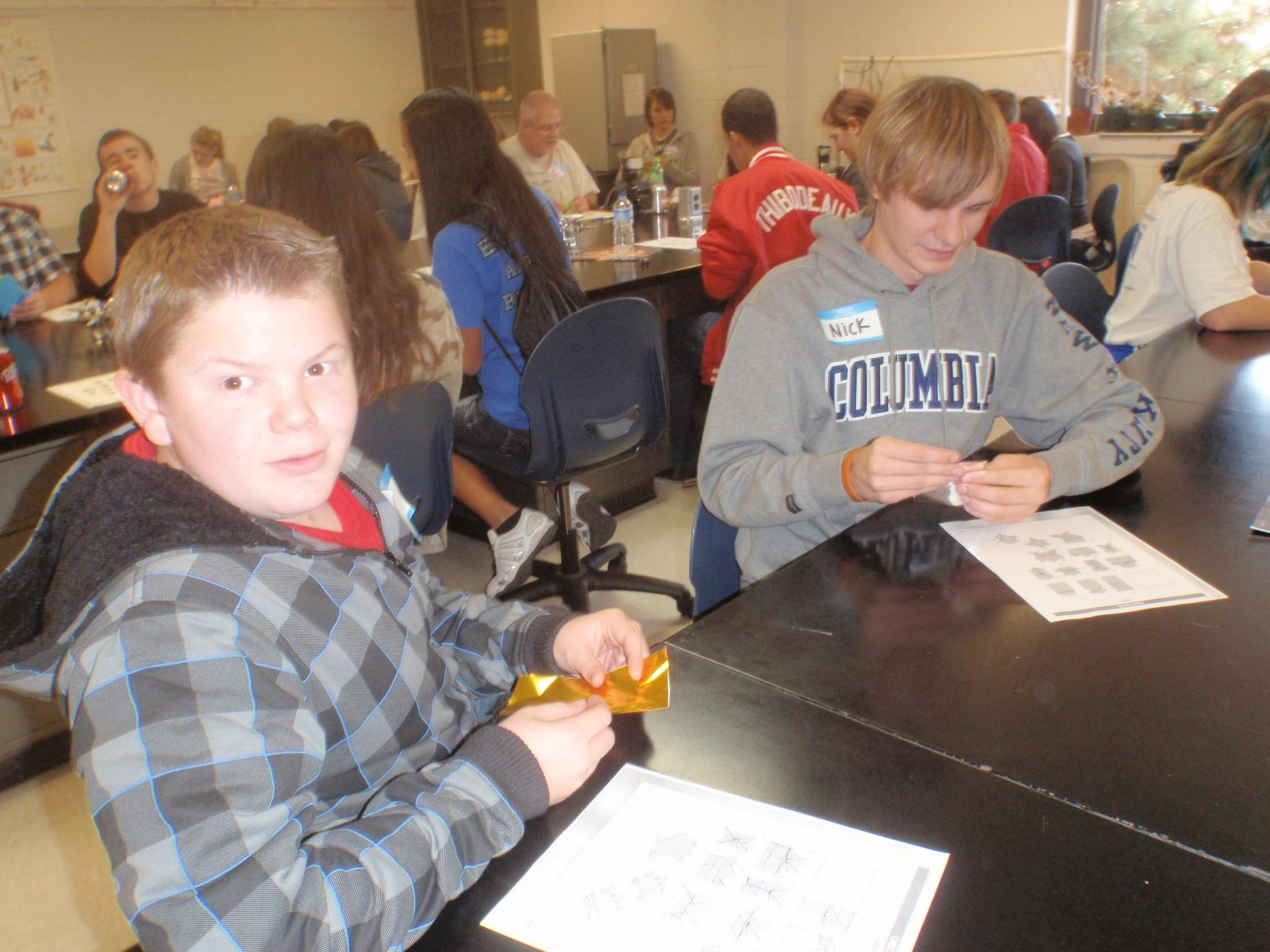
TEACHERS: To register for the conference, email BETH LANDON with your name, cell number, and the student roster of who is attending with you. blandon@okcu.edu or call (405) 208-5041.

Beth Landon is our scientific architect of the PLAY HARD student workshop. Beth is the lab tech and service learning instructor for the Blue Thumb Service/Learning class in the Biology Department at Oklahoma City University. She is also a dedicated Blue Thumb volunteer since 2001. You will learn more about Beth and her commitment to the environment at PLAY HARD.

"I love to learn about anything and everything, but I learn best when I'm having fun."









CREEK	NUMBERS	D.O.	JEAN SAYS	ON THE NET	THE PICK
200	200	200	200	200	200
400	400	400	400	400	400
600	600	600	600	600	600
800	800	800	800	800	800
1000	1000	1000	1000	1000	1000

Remember to phrase your answer in the form of a question.

In the category "Jean Says:"

Always read at exactly 8 minutes.

Beep beep, beep beep.

In the category "At the Creek:"

Neither rain nor snow nor
heat shall keep us from
the creek,
but one thing will.

And just one more ...

because I'm having fun.

Also in the category "At the Creek:"

Air before water

so it doesn't get hotter.

(Probably supposed to be colder,
but it doesn't rhyme.)



Bug Bingo!

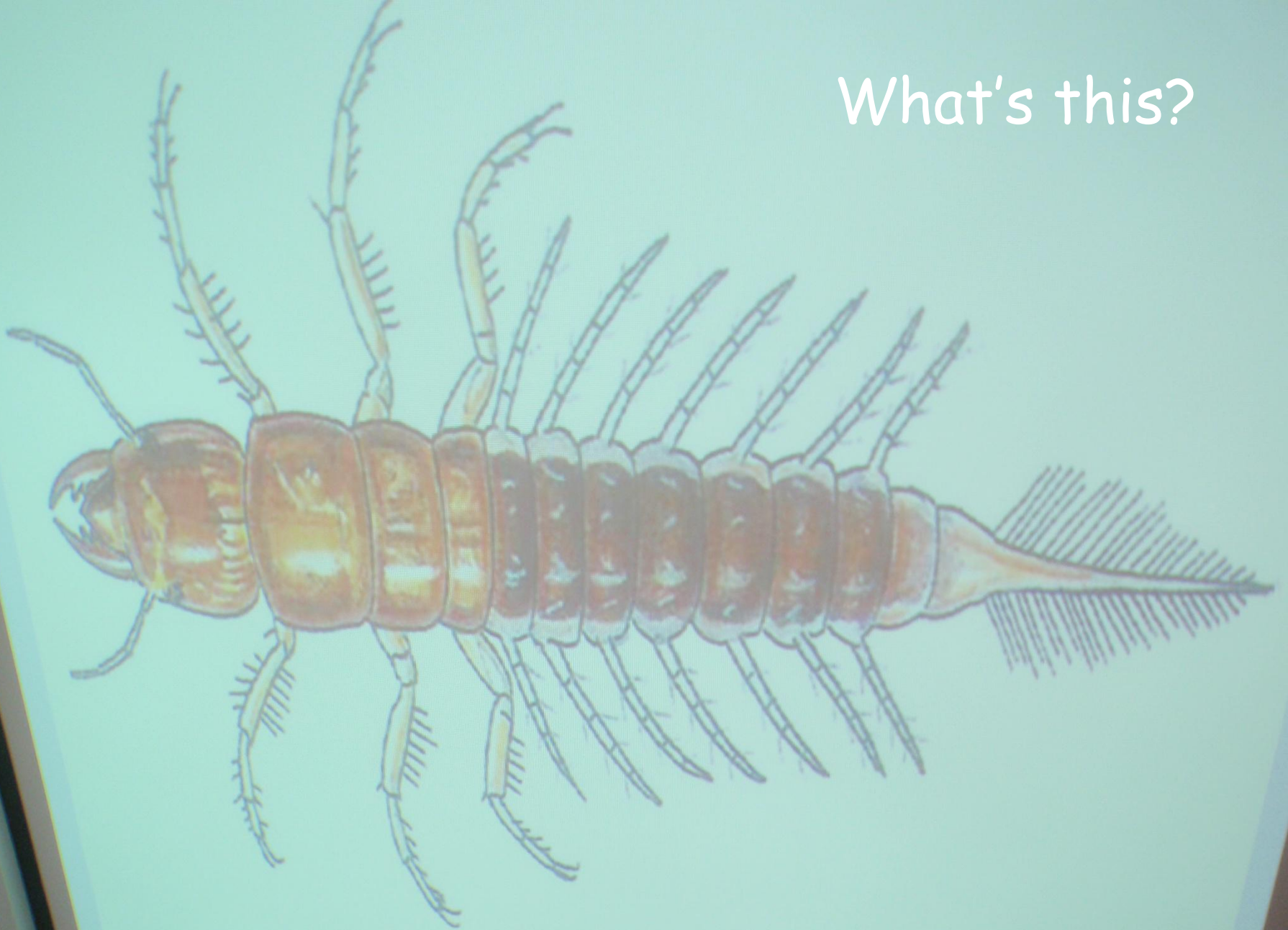


You know the clam, but can you guess the one at the top?

White Penny	Gill Snail
Clam	Stonefly
Your Favorite Bug	Caddisfly Larvae
Phantom	Crane fly
Leech	
Crane fly	

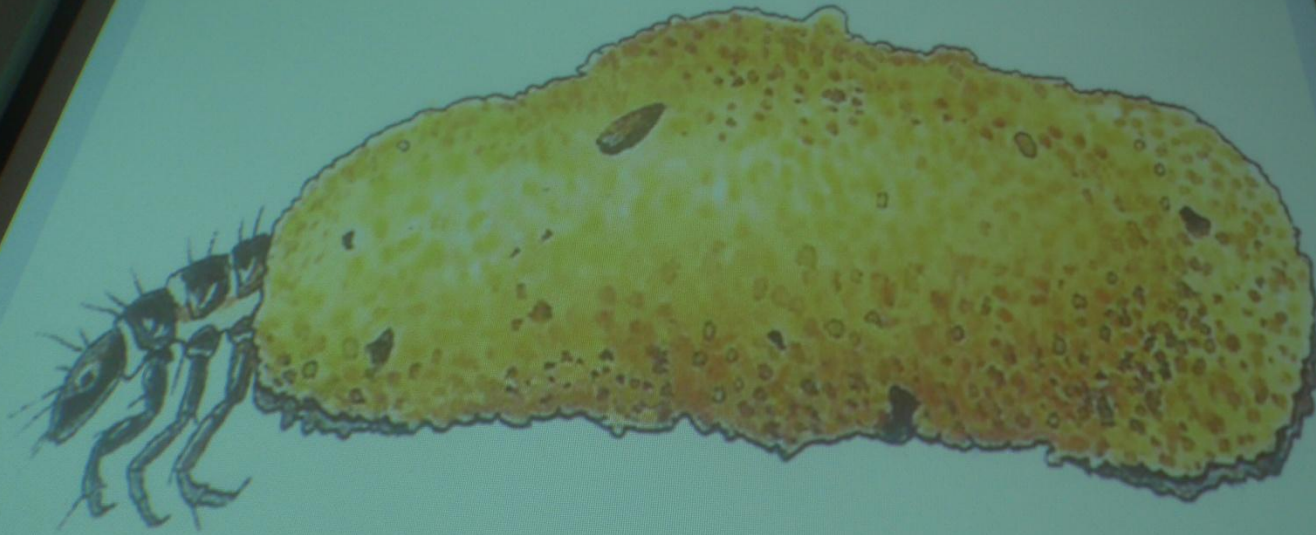
B	I	N	G	O
Isopod	Bloodworm Midge Larvae	Caddisfly Casings		Ephemeroptera
Damselfly	Alderfly	Riffle Beetle Beetle	Water Penny	Blackfly
Non-Red Midge Larvae	Tricoptera	Your Favorite Bug		Gill Snail
Dragonfly	Riffle Beetle Larva	Plecoptera	Caddisfly Larvae	Stonefly
Lung Snail	Dobsonfly		Crane fly	Hellgram-mite;

What's this?



Don't worry, I had to look it up again, too.

And what's this?



You didn't know there was going to be a test, did you!?!



Blue Thumb

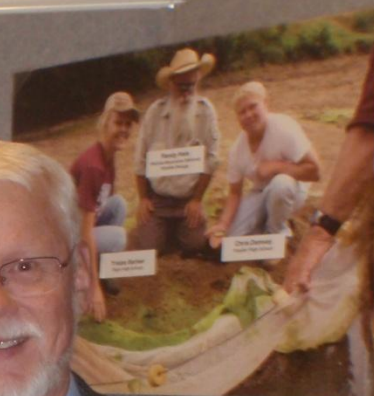
Water Pollution Education Program

Comanche County



Streams monitored by Blue Thumb Volunteers in Comanche County:

Jimmy Creek
Medicine Creek
Panther Creek
Post Oak Creek
Sage Creek



DAWSON - LOEFFLER
SCIENCE AND MATHEMATICS
CENTER



The Environmentor

blandon@okcu.edu

And a good time was had by all!!

Acknowledgements

I would like to express my appreciation for the generous support and encouragement from the faculty and administration of the Department of Biology at Oklahoma City University and the staff of the State and local Blue Thumb offices.

Dr. Kent Buchanan
Dr. Adam Ryburn

Cheryl Cheadle
Jean Lemmon
Kim Shaw